

# Creating a Positive Living Environment for People with Dementia

Rudy P. Friesen, Partner Emeritus  
ft3 Architecture Landscape Interior Design

Robert Wrublowsky, Principal Architect  
MMP Architects

Ken Kollinger, Regional Director  
WRHA Capital Planning

*March 7, 2016*

**Dementia Care**  
 **2016**

# Evolution of Elder Care

Rudy P. Friesen, Partner Emeritus  
ft3 Architecture Landscape Interior Design



[ELDERing.ca](http://ELDERing.ca)

*March 7, 2016*



# Evolution of Elder Care

1. Traditional
2. Institutional
3. Humanistic
4. Next-Stage

# 1. Traditional

*Family – Familiarity – Faithfulness*

- duty-bound; focus on doing the right thing
- stability & security of home
- highly personal
- family members care for loved one
- difficult for modern families

# 1. Traditional

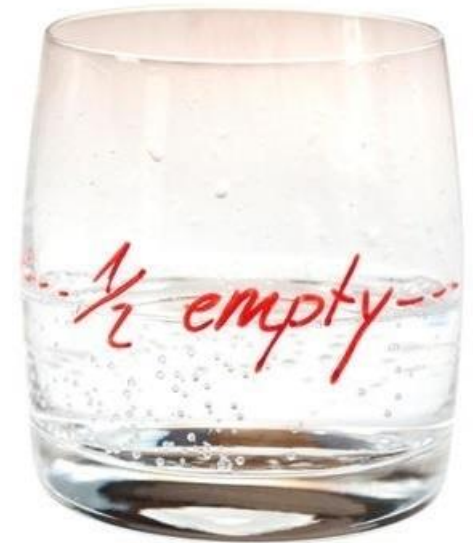


aging at home

## 2. Institutional

*Function – Fit – Funds*

- expediency & efficiency; focus on physical needs; “clinical gaze”
- warehousing “patients” in “nursing” homes
- medicalization of ageing; drugs as management tool
- hierarchical staffing structure; rigid schedules
- inhuman; residents’ mental and emotional health suffers



## 2. Institutional



long “horridors”,  
glaring floors



nurses stations



## 2. Institutional



slumping



shared rooms



## 2. Institutional



Sources: CBC.ca and seniorhousingforum.net

## 2. Institutional



despair kills

### 3. Humanistic

*Fellowship – Feelings – Fiction*

- resident-centred; compatible groupings; focus on individual needs
- homelike environment; households; family-style dining; access to outdoors
- flexible schedules; familiar routines
- self-managed caregiver teams  
incl. meals, housekeeping, activities
- ghettoization; prevents normal social interaction



### 3. Humanistic



welcome to our household

De Hogeweyk, Weesp, Netherlands



# 3. Humanistic

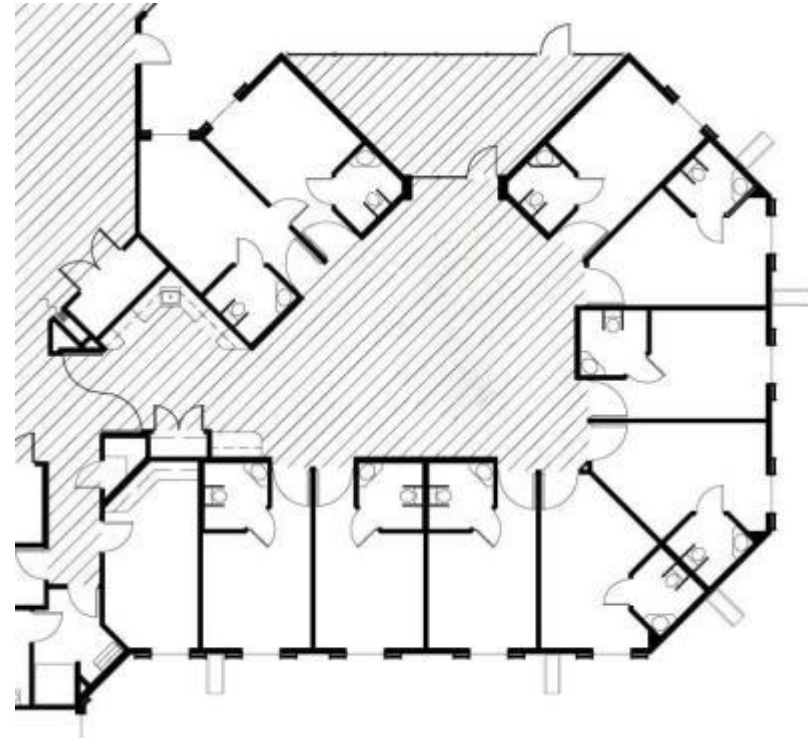
## *Chez Nous*



dining / living area

Fisher Personal Care Home, Fisher Branch, MB

Architect: ft3, Winnipeg, MB



plan, 10-resident household

Fisher Personal Care Home, Fisher Branch, MB

Architect: ft3, Winnipeg, MB

### 3. Humanistic

#### *Green House Project*



kitchen / dining / living area

10-resident household

Penick Village, Winston Salam, NC



hearth

Leonard Florence Centre  
for Living, Chelsea, MA



# 3. Humanistic

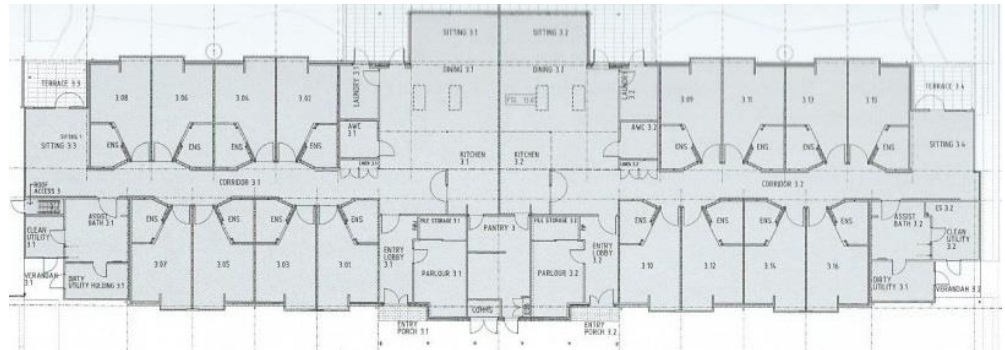
*HammondCare*



cottage yard, hills hoist

plan, 8-resident cottages

HammondCare Miranda,  
Sydney, NSW, Australia

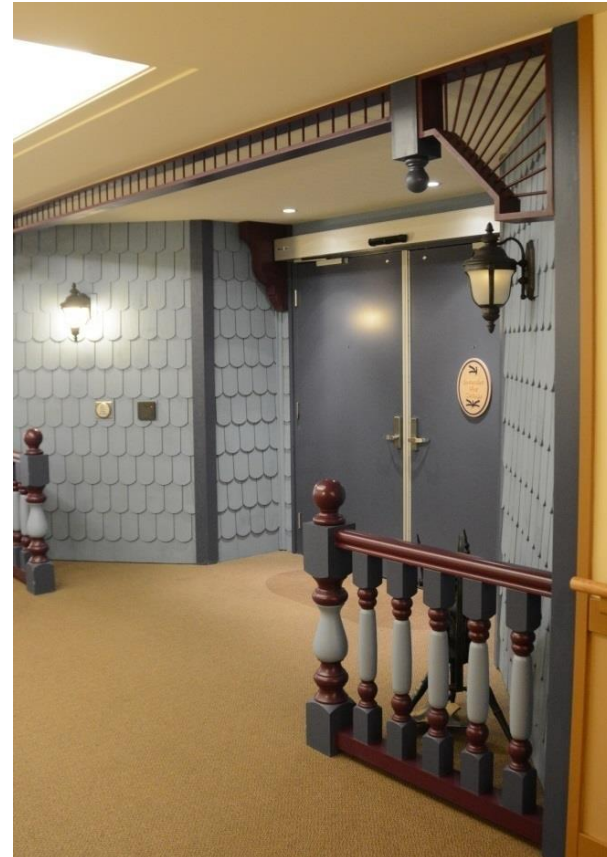


### 3. Humanistic



window seat,  
resident room

Czorny Alzheimer Centre, Surrey, BC



entrance to  
12-resident household

Czorny Alzheimer Centre, Surrey, BC



### 3. Humanistic



dining / living area, 6-resident household

De Hogeweyk, Weesp, Netherlands

### 3. Humanistic



outdoor activities

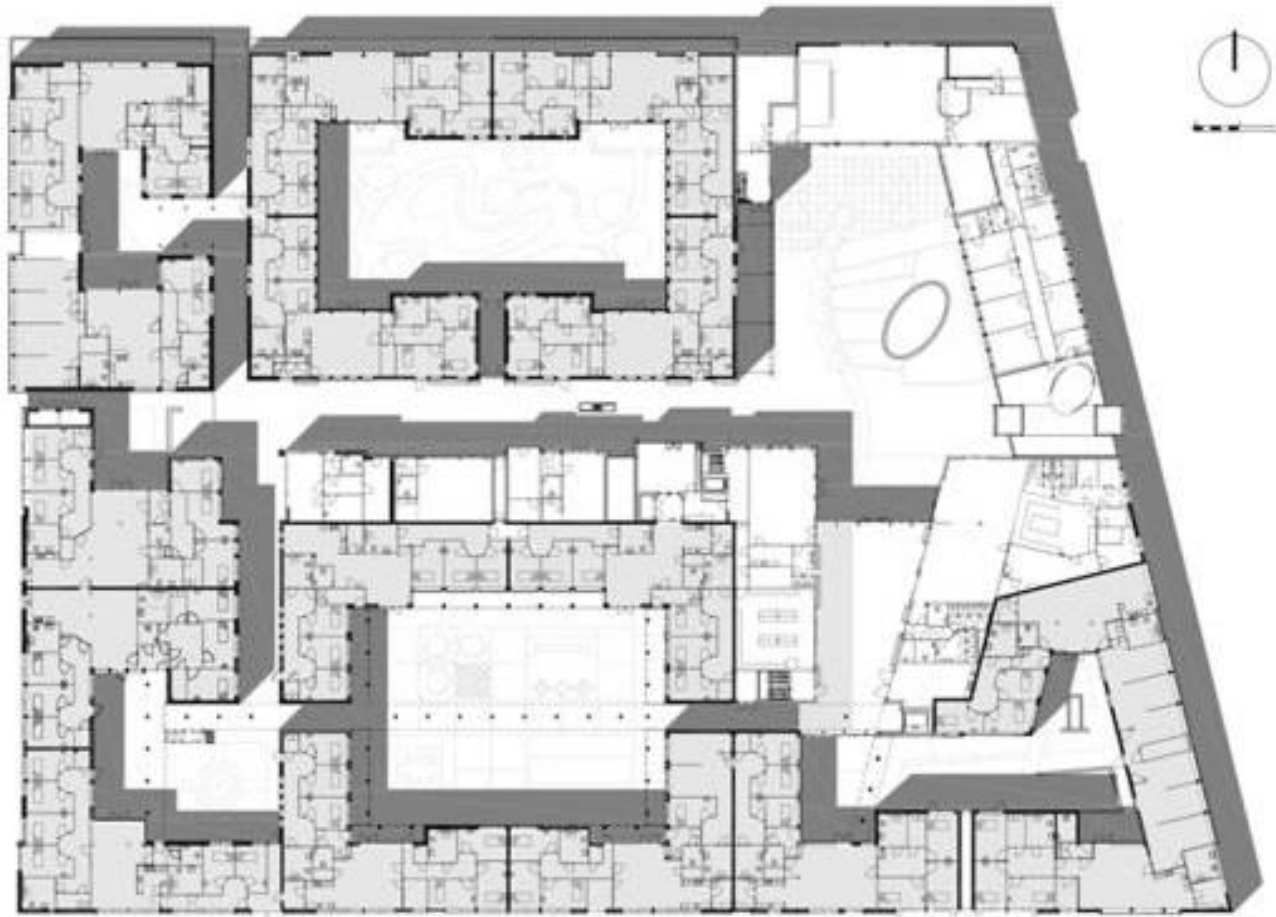
De Hogeweyk, Weesp, Netherlands



art class

De Hogeweyk, Weesp, Netherlands

### 3. Humanistic



village plan, 23 households

De Hogeweyk, Weesp, Netherlands



### 3. Humanistic

#### *Reminiscence Therapy*



memory lane, 1950s reminiscence village

The Grove Care Home, Winterbourne, Bristol, UK

Source: Telegraph.co.uk. Photo: Jay Williams



### 3. Humanistic

#### *The Butterfly Household*



connecting with resident's present, not past

Whitemud Lifestyle Options Memory Care Unit, Edmonton, AB

## 4. Next-Stage

*Flux – Flex – Flow*

- what's best all around, for everyone; focus on whole person
- blended with other housing types; systems approach
- meaningful engagement in community life
- dementia-friendly shops, neighbourhoods, cities
- self-organized teams



## 4. Next-Stage



kindergarten in care facility

Grace Living Centre, Jenks, OH



## 4. Next-Stage

### *Mixed-Use Facilities*

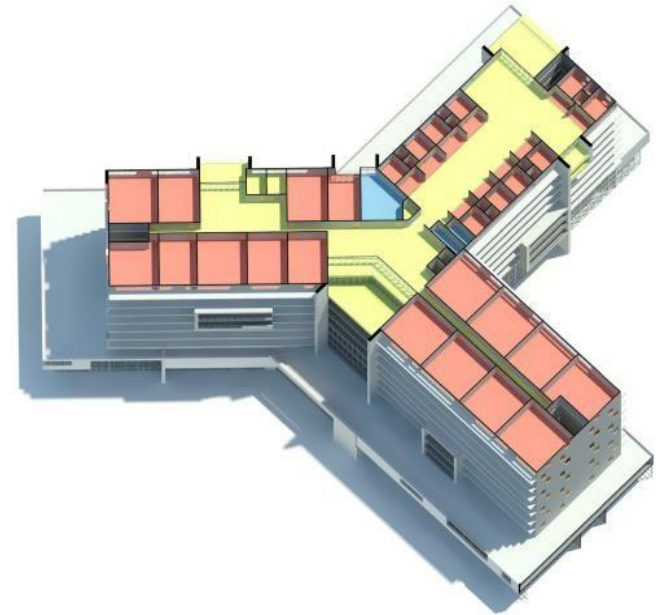


### vertical village integrating diversity

The Interlace, Singapore

Architect: Ole Scheeren/OMA, Rotterdam, NL

Source: de zeen magazine



### integrative elder living

Proposed Development, Calgary, AB

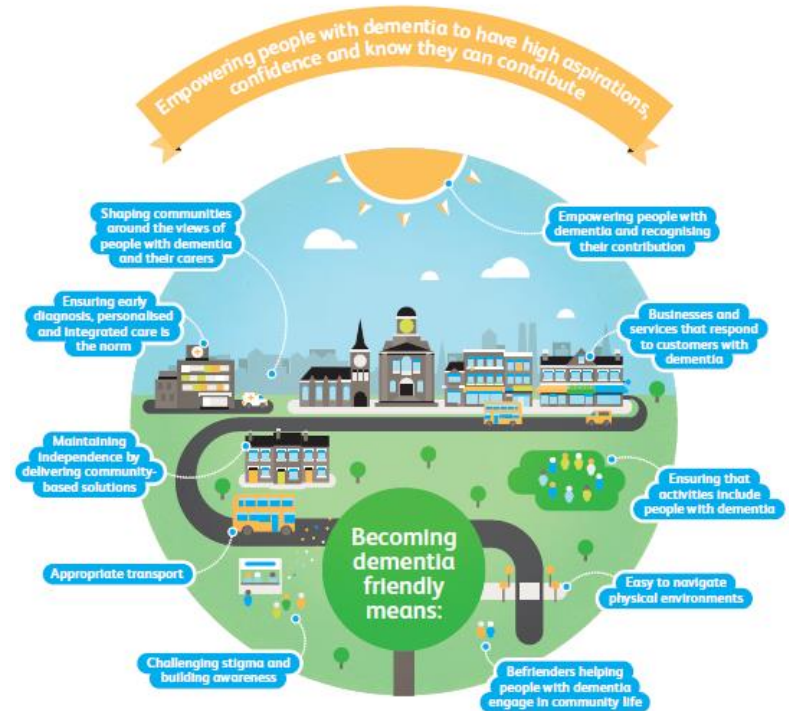
Architect: ft3, Winnipeg, MB

# 4. Next-Stage

## *Dementia-Friendly Communities*



ACT on Alzheimers (Minnesota)



Alzheimer's Society (UK)

## 4. Next-Stage



[rudypfriesen@gmail.com](mailto:rudypfriesen@gmail.com)

thriving, not just surviving